

FB73T

Discover the pleasure of performance



- Broad range of control options
- LED work light attachment for better visibility and safety
- Strong and lightweight grapples

Crane FB73T

FTG Källefäll crane FB73T provides a total reach up to 7.3 m and a 680kg lifting capacity at the maximum reach.

Crane is equipped with a linkage system and a telescopic arm with an internally positioned telescopic cylinder for even higher functionality. Crane has excellent loading geometry and nicely settles into the trailer for transporting position. Strong main crane base provides perfect stability during loading and unloading operations.

Crane FB73T is equipped with a slewing motor with 4 slewing cylinders and has telescopic boom, 4 ton rotator, hydraulic hose connection to the crane column and to the rotator, rotator link with pending brake, grapple FB190WF as standard. The crane has a lifting moment of 70 kNm (gross)

and a slewing torque of 16 kNm. There are numerous valve packages and accessories to choose from. Crane designed for versatile work applications:

- Forest trailers
- Chippers
- Log splitters
- Attachment to the tractor

FB73T combined with FTG Källefäll forest trailers offers high reliability and efficiency. Demand for maintenance is quite low for high-quality components and tested designs

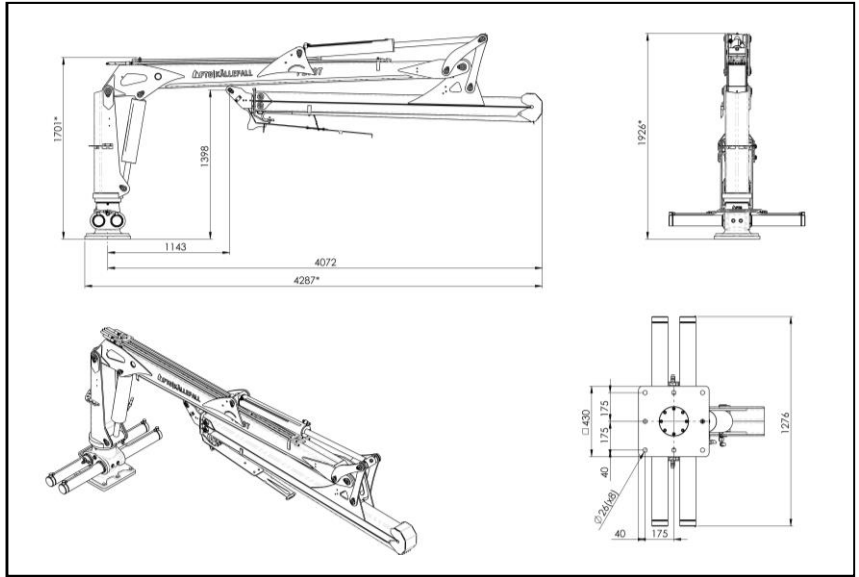
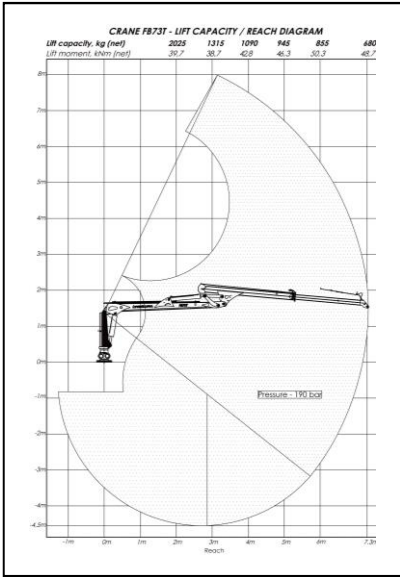
Suitable trailers:

- [FB90D](#)
- [FB100](#)
- [FB100-2WD](#)
- [FB120D](#)

Technical characteristics Crane (standard equipment)

Parameter	FB73T	Parameter	FB73T
Reach, m	7,3	Slewing angle, °	360
Linkage system	Yes	Total weight, kg	950
Telescope extension, m	1,80	Oil flow, l/min	40-60
Lifting moment (Gross), kNm	70	Rotator, type	4 t
Lifting moment (Net), kNm	48,7	Rotator link, type	With pending brake
Lifting capacity at max reach, kg	680	Grapple, type	FB190WF
Lifting capacity at 4m, kg	1090	Valve block, type	Mechanical (2-Lev./3-Coord.)
Slew torque, kNm	16	Working pressure, bar	190

Technical drawings



FB73T accessories

Control system

Mechanical 2 x EL.
On/Off



Mechanical 2-Lever,
Lightweight, 4 x EL.
On/Off



Prehydraulic with
Joysticks



Full electric with
with Joysticks



Radio control



Winch

1410 KPL with
remote controller



3-Point attachment

Flap-Down type,
integrated oil tank,
CAT. II



Flap-Down type,
CAT. III



Independent hydr. system for 3-P attachment



Block valve for support legs



Grapple

Brush grapple FB190S (0.19 m²)



Grapple FB210 (0.21 m²)



Grapple-bucket FB120V (120 L)



Brush grapple FB210S (0.21 m²)



Grapple FB260 (0.26 m²)



Add-on bucket for grapple



Other accessories

Protection plate for lifting cylinder



LED work light on crane boom



LED work light on crane pillar



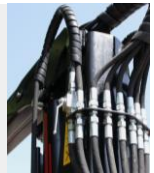
Chainsaw holder



Supply pressure monometer



Shut-off valve for lifting cylinder



Valve block cover



FTG BALTIC UAB

Dūmų st. 3 K20
LT-11119 Vilnius, Lithuania
+370 5 246 23 18
sales.vilnius@ftgforest.com

For more information: www.ftgkallefall.com

By combining our Swedish heritage with constant innovation based on the needs of customers, we design forest trailers and cranes that impress by their consistently pleasant performance.

FTG Källefäll forest trailers can pass through challenging terrains and are robustly built to withstand tough grips in the forest. Trailers' capacity varies from 3 to 12 tones. Our trailers can be supplemented with telescopic cranes, ranging from 4,2 to 9,4 meters reach. Källefäll cranes are strong, fast, and easy to operate. We also offer a wide range of timber grapples and other accessories to meet different needs.