

# P67T

Discover the pleasure of performance



- Unique parallel movement
- Runs on low oil flow, 60-65% less than a traditional crane
- Easy to control, the crane tip moves in a straight line

# Crane P67T

FTG Källefäll crane P67T provides a total reach up to 6.7 m and a 400 kg lifting capacity at the max reach.

Unique parallel movement that maintains the same lifting moment throughout the range. Only one cylinder is active for this movement.

Runs on low oil flow, 60–65% less than a traditional crane. This makes it possible to reduce the number of revolutions and improve fuel consumption and the environment.

Crane P67T comes standard with 3 ton rotator, FB160 grapple, rotator link with pending brake, mechanical control, 4 cylinder slewing motor. The forest crane has a

lifting moment of 34 kNm (gross) and a slewing torque of 8.5 kNm. There are numerous valve packages and accessories to choose from. Crane designed for versatile work applications:

- Forest trailers
- Chippers
- Log splitters
- Attachment to the tractor

P67T combined with FTG Källefäll forest trailers offers high reliability and efficiency. Demand for maintenance is quite low for high-quality components and tested designs.

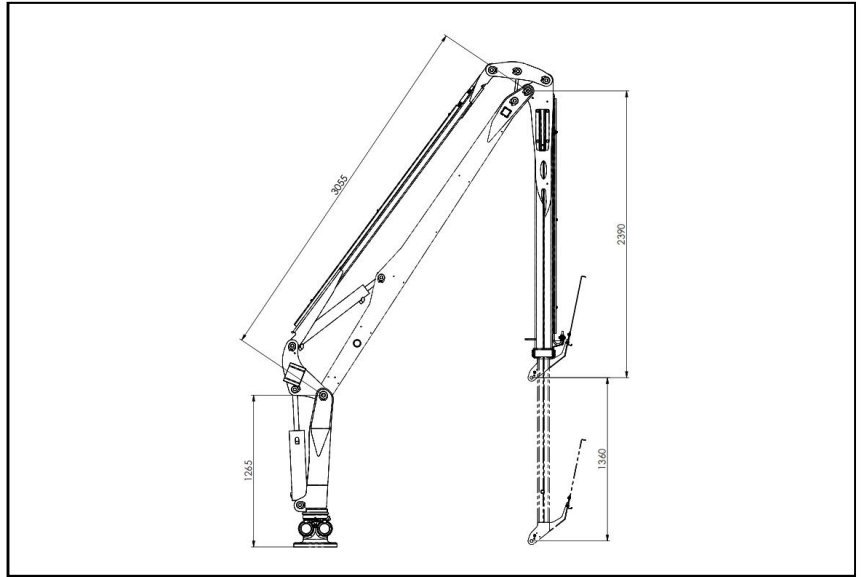
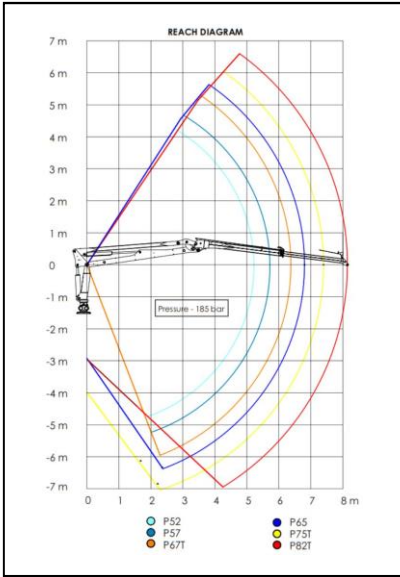
## Suitable trailers:

- [FB70](#)
- [FB90](#)
- [FB90-2WD](#)
- [FB90D](#)

## Technical characteristics Crane (standard equipment)

Parameter	P67T	Parameter	P67T
Reach, m	6,7	Slewing angle, °	360
Linkage system	Yes	Total weight, kg	620
Telescope extension, m	1,36	Oil flow, l/min	30–35
Lifting moment (gross), kNm	34	Rotator, type	3 t
Lifting moment (Net), kNm	27	Rotator link, type	With pending brake
Lifting capacity at max reach, kg	400	Grapple, type	FB160
Lifting capacity at 4m, kg	625	Valve block, type	Mechanical (2-Lev. / 3-Coord.)
Slew torque, kNm	8,5	Working pressure, bar	185

## Technical drawings



## FB67T accessories

### Control system

Mechanical  
FRV60/8-E, 2 x EL.  
On/Off



Mechanical 2-Lever,  
Lightweight, 4 x EL.  
On/Off



Prehydraulic  
FRV60EO with  
Joysticks



Full electric with  
with ERGO-  
DigiStick® Joysticks



Radio control  
Scanreco®



### Winch

1410 KPL with  
remote control



### 3-P attachment

A-frame type,  
CAT. II



Independent hydr.  
system for 3-P  
attachment



Block valve for telescopic support legs



## Grapple

Brush grapple FB160S (0.16 m<sup>2</sup>)



Grapple FB190 (0.19 m<sup>2</sup>)



Brush grapple FB190S (0.19 m<sup>2</sup>)



Clamshell bucket KG180 (0.11 m<sup>3</sup>)



Add-on bucket for grapple



## Other accessories

Chainsaw holder



LED work light on crane boom



LED work light on crane pillar



Supply pressure monometer



Connection of hydr. hoses on pillar



Shut-off valve for lifting cylinder



Valve block cover



## FTG BALTIC UAB

Dūmų st. 3 K20  
LT-11119 Vilnius, Lithuania  
+370 5 246 23 18  
[sales.vilnius@ftgforest.com](mailto:sales.vilnius@ftgforest.com)

By combining our Swedish heritage with constant innovation based on the needs of customers, we design forest trailers and cranes that impress by their consistently pleasant performance.

FTG Källefäll forest trailers can pass through challenging terrains and are robustly built to withstand tough conditions in the forest. Trailers' capacity varies from 2,5 to 12 tones. Our trailers can be supplemented with telescopic cranes, ranging from 4,2 to 9,4 meters reach. Källefäll cranes are strong, fast, and easy to operate. We also offer a wide range of timber grapples and other accessories to meet different needs.

For more information: [www.ftgforest.com](http://www.ftgforest.com)