

M65T

Discover the pleasure of performance



- Broad range of control options and accessories
- LED work light attachment for better visibility and safety
- Strong and lightweight grapples

Crane M65T – crane with a long reach

FTG Källefäll crane M65T has a total reach of 6,5 m, a 280kg lifting capacity at full reach and 675kg at 4 m.

The linkage system gives a better movement pattern and a smoother crane run. The overhead cylinders are well protected and provide good lifting torque within the working area.

As standard, the crane is equipped with 3t rotator with unbraked link, FB160 grapple and mechanical valve block CRV60/8A.

There are numerous valve packages and accessories to choose from. Crane designed for versatile work applications:

- Forest trailers
- Chippers
- Log splitters
- Attachment to the tractor

M65T combined with FTG Källefäll forest trailers offers high reliability and efficiency. Demand for maintenance is quite low for high-quality components and tested designs

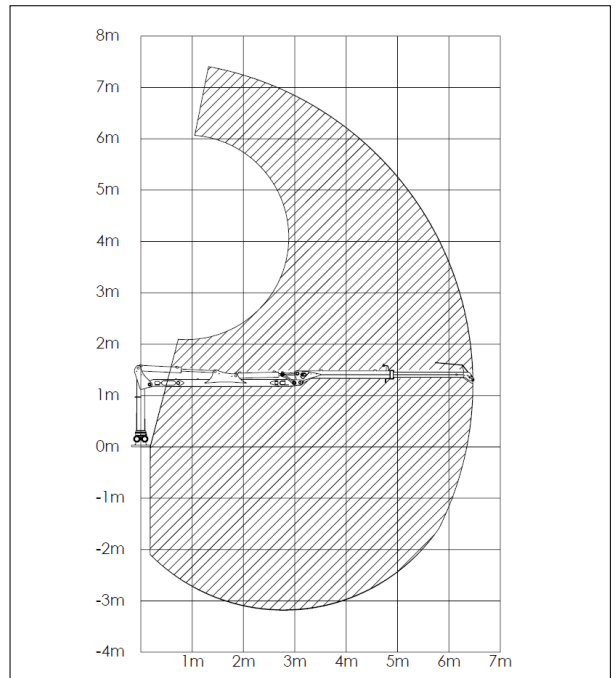
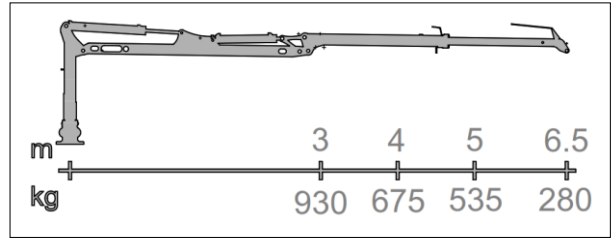
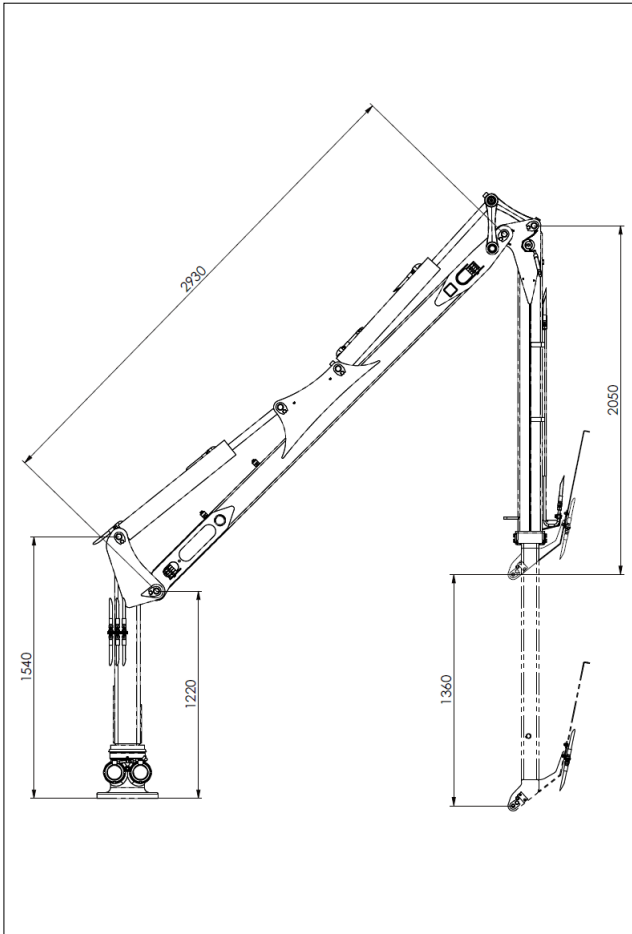
Suitable trailers:

- [FB70](#)
- [FB90D](#)
- [FB90](#)
- [FB90-2WD](#)

Technical characteristics Crane (standard equipment)

<i>Parameter</i>	<i>M65T</i>	<i>Parameter</i>	<i>M69T</i>
Reach, m	6,5	Slewing angle, °	360
Linkage system	Yes	Total weight, kg	620
Telescope extension, m	1,36	Oil flow, l/min	25-35
Lifting moment (gross), kNm	25	Rotator, type	3 t
Lifting moment (Net), kNm	19,5	Rotator link, type	Without pending brake
Lifting capacity at max reach, kg	280	Grapple, type	FB160
Lifting capacity at 4m, kg	675	Valve block, type	Mechanical (2-Lev. / 3-Coord.)
Slew torque, kNm	8,5	Working pressure, bar	185

Technical drawings



M65T accessories

Valve block

Mechanical
CRV80/8A
(80l/min)



Mechanical
On/Off (60 and
80 l/min)



Lightweight valve
with el. On/Off



Low pressure
hydraulic control
PCL



Full electric with
with Joysticks



Radio control
Scanreco®



Winch

1410 KPL with
radio control



3-Point attachment

A-frame type,
CAT. I



Independent hydr. system for 3-P attachment



Block valve for telescopic support legs



Grapple

Brush grapple FB160S (0.16 m²)



Grapple FB190 (0.19 m²)



Brush grapple FB190S (0.19 m²)



Grapple FB190WF (0.19 m²)



Clamshell bucket KG180 (0.11 m³)



Add-on bucket for grapples



Other accessories

Supply pressure monometer



LED work light on crane boom



LED work light on crane pillar



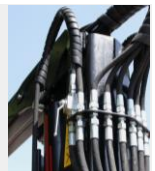
Chainsaw holder



Valve block cover



Shut-off valve for lifting cylinder



FTG BALTIC UAB

Dūmų st. 3K20
LT-11119 Vilnius, Lithuania
[+370 5 246 23 18](tel:+37052462318)
sales.vilnius@ftgforest.com

For more information: www.ftgforest.com

By combining our Swedish heritage with constant innovation based on the needs of customers, we design forest trailers and cranes that impress by their consistently pleasant performance.

FTG Källefäll forest trailers can pass through challenging terrains and are robustly built to withstand tough conditions in the forest. Trailers' capacity varies from 4 to 12 tones. Our trailers can be supplemented with telescopic cranes, ranging from 4,2 to 9,4 meters reach. Källefäll cranes are strong, fast, and easy to operate. We also offer a wide range of timber grapples and other accessories to meet different needs.