

M69T

Discover the pleasure of performance



- Broad range of control options and accessories
- LED work light attachment for better visibility and safety
- Strong and lightweight grapples

Crane M69T – robust crane with reach and power

FTG Källefäll crane M69T has a total reach of 6,9 m, a 450kg lifting capacity at full reach and 900kg at 4 m.

Link system and hydraulic cylinder mounted on top of the boom for better movement pattern and it has a lifting moment of 43 kNm. The crane has an "bent" lifting boom that allows you to park the crane stably against the trailer. This also makes the crane more powerful at longer reach from the trailer.

As standard, the crane is equipped with 3t rotator with braked link, FB160 grapple and mechanical valve block CRV60/8A.

There are numerous valve packages and accessories to choose from. Crane designed for versatile work applications:

- Forest trailers
- Chippers
- Log splitters
- Attachment to the tractor

M69T combined with FTG Källefäll forest trailers offers high reliability and efficiency. Demand for maintenance is quite low for high-quality components and tested designs

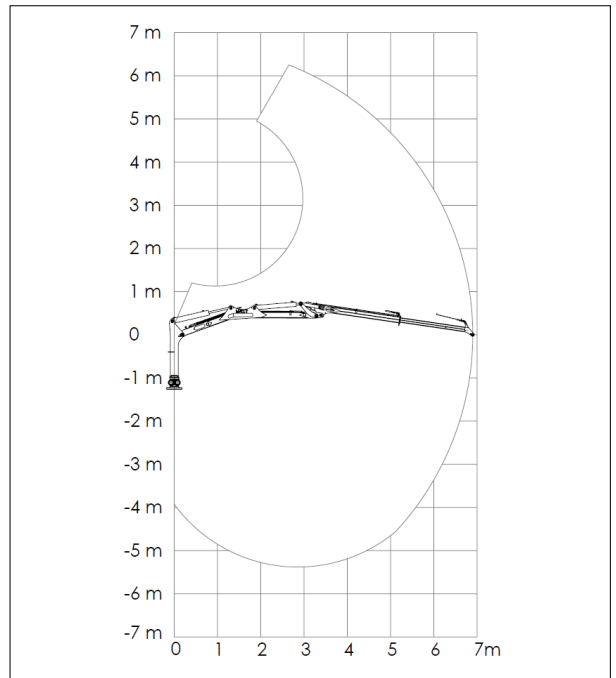
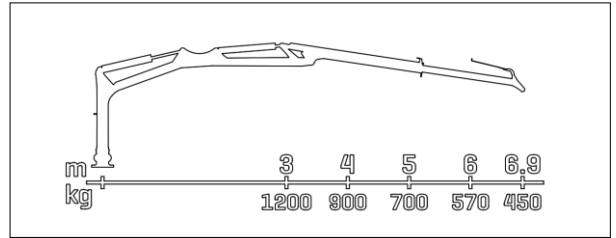
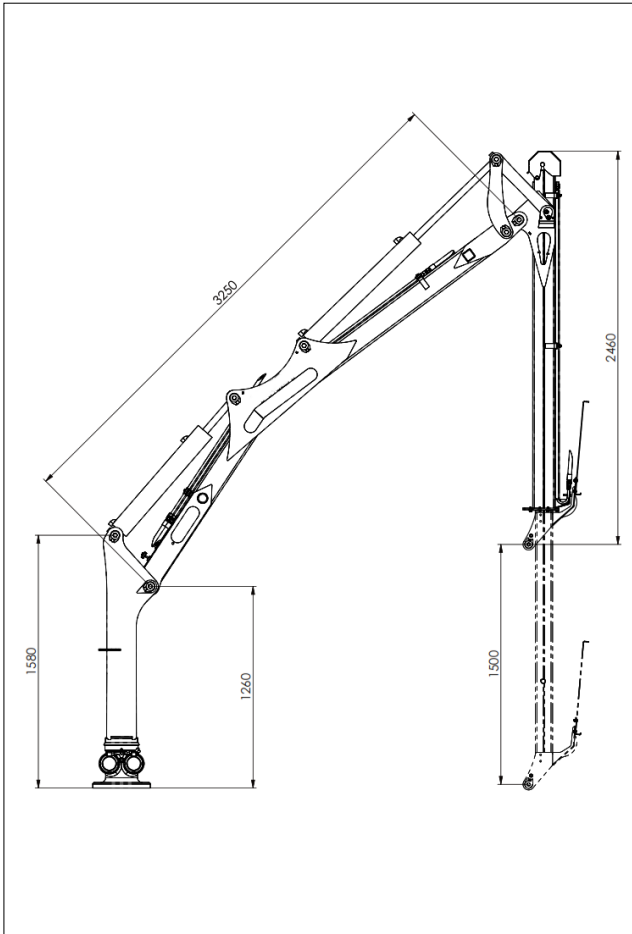
Suitable trailers:

- [FB90](#)
- [FB100](#)
- [FB90-2WD](#)
- [FB100-2WD](#)
- [FB90D](#)
- [FB120D](#)

Technical characteristics Crane (standard equipment)

Parameter	M69T	Parameter	M69T
Reach, m	6,9	Slewing angle, °	360
Linkage system	Yes	Total weight, kg	720
Telescope extension, m	1,5	Oil flow, l/min	35-50
Lifting moment (gross), kNm	43	Rotator, type	3 t
Lifting moment (Net), kNm	31,5	Rotator link, type	With pending brake
Lifting capacity at max reach, kg	450	Grapple, type	FB160
Lifting capacity at 4m, kg	900	Valve block, type	Mechanical (2-Lev. / 3-Coord.)
Slew torque, kNm	11	Working pressure, bar	185

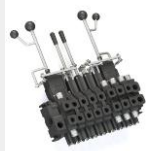
Technical drawings



M69T accessories

Valve block

Mechanical
CRV80/8A
(80l/min)



Mechanical
On/Off (60 and
80 l/min)



Lightweight valve
with el. On/Off



Low pressure
hydraulic control
PCL



Full electric with
with Joysticks



Radio control
Scanreco®



Winch

1410 KPL with
radio control



3-Point attachment

A-frame type,
CAT. II



Independent hydr. system for 3-P attachment



Block valve for telescopic support legs



Grapple

Brush grapple FB160S (0.16 m²)



Grapple FB190 (0.19 m²)



Brush grapple FB190S (0.19 m²)



Grapple FB190WF (0.19 m²)



Clamshell bucket KG180 (0.11 m³)



Add-on bucket for grapples



Other accessories

Supply pressure monometer



LED work light on crane boom



LED work light on crane pillar



Chainsaw holder



Valve block cover



Shut-off valve for lifting cylinder



FTG BALTIC UAB

Dūmų st. 3K20
LT-11119 Vilnius, Lithuania
[+370 5 246 23 18](tel:+37052462318)
sales.vilnius@ftgforest.com

For more information: www.ftgforest.com

By combining our Swedish heritage with constant innovation based on the needs of customers, we design forest trailers and cranes that impress by their consistently pleasant performance.

FTG Källefäll forest trailers can pass through challenging terrains and are robustly built to withstand tough conditions in the forest. Trailers' capacity varies from 4 to 12 tones. Our trailers can be supplemented with telescopic cranes, ranging from 4,2 to 9,4 meters reach. Källefäll cranes are strong, fast, and easy to operate. We also offer a wide range of timber grapples and other accessories to meet different needs.