

# M75T

Discover the pleasure of performance



- Broad range of control and accessories
- LED work light attachment for better visibility and safety
- Strong and lightweight grapples

# Crane M75T – durable crane with great specifications

FTG Källefäll crane M75T has a total reach of 7,5 m, a 500kg lifting capacity at full reach and 1100kg at 4 m.

Link system and hydraulic cylinder mounted on top of the boom for better movement pattern and it has a lifting moment of 55 kNm.

The crane has an "bent" lifting boom that allows you to park the crane stably against the trailer. This also makes the crane more powerful at longer reach from the trailer.

As standard, the crane is equipped with 4t rotator with braked link, FB190WF grapple and mechanical valve.

## Suitable trailers:

- [FB100](#)
- [FB100-2WD](#)
- [FB120D](#)

There are numerous valve packages and accessories to choose from. Crane designed for versatile work applications:

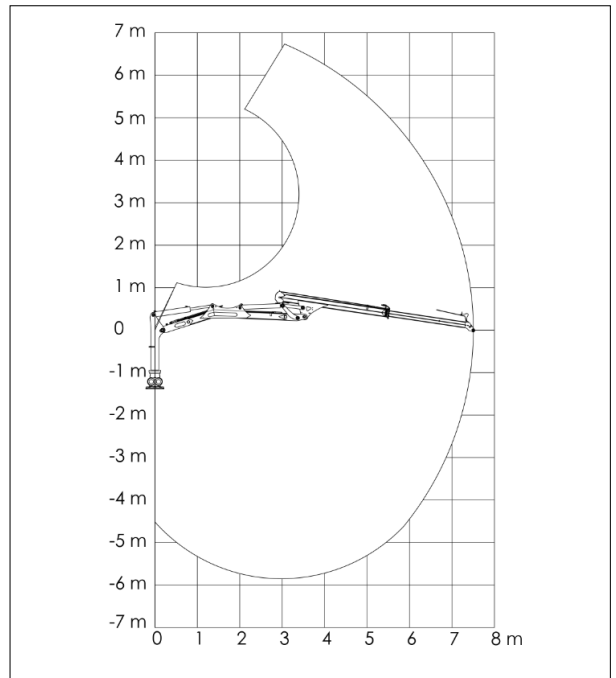
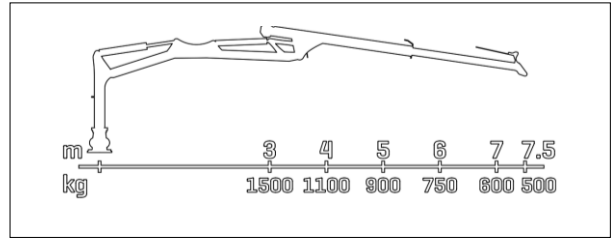
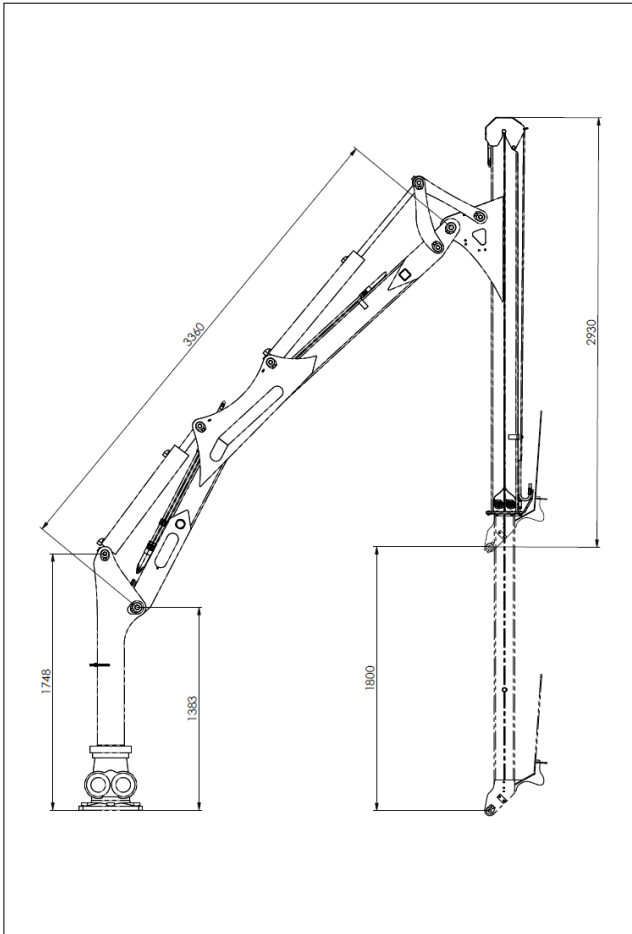
- Forest trailers
- Chippers
- Log splitters
- Attachment to the tractor

M75T combined with FTG Källefäll forest trailers offers high reliability and efficiency. Demand for maintenance is quite low for high-quality components and tested designs

## Technical characteristics Crane (standard equipment)

<i>Parameter</i>	<i>M75T</i>	<i>Parameter</i>	<i>M75T</i>
Reach, m	7,5	Slewing angle, °	360
Linkage system	Yes	Total weight, kg	740
Telescope extension, m	1,8	Oil flow, l/min	40-60
Lifting moment (gross), kNm	55	Rotator, type	4 t
Lifting moment (Net), kNm	37,5	Rotator link, type	With pending brake
Lifting capacity at max reach, kg	500	Grapple, type	FB190WF
Lifting capacity at 4m, kg	1100	Valve block, type	Mechanical (2-Lev. / 3-Coord.)
Slew torque, kNm	16	Working pressure, bar	185

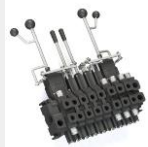
## Technical drawings



## M75T accessories

### Valve block

Mechanical  
CRV80/8A  
(80l/min)



Mechanical  
On/Off (60 and  
80 l/min)



Lightweight valve  
with el. On/Off



Low pressure  
hydraulic control  
PCL



Full electric with  
with Joysticks



Radio control  
Scanreco®



### Winch

1410 KPL with  
radio control

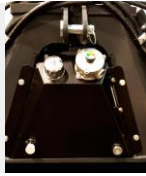


### 3-Point attachment

A-frame type,  
CAT. III



Independent hydr. system for 3-P attachment



Block valve for telescopic support legs



## Grapple

Brush grapple FB190S (0.19 m<sup>2</sup>)



Grapple FB210 (0.21 m<sup>2</sup>)



Brush grapple FB210S (0.21 m<sup>2</sup>)



Clamshell bucket FB120V (0.12 m<sup>3</sup>)



Clamshell bucket KG180 (0.11 m<sup>3</sup>)



Add-on bucket for grapples



## Other accessories

Flange mounted rotator 4t



LED work light on crane boom



LED work light on crane pillar



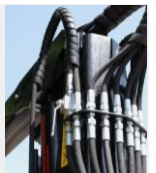
Chainsaw holder



Valve block cover



Shut-off valve for lifting cylinder



Supply pressure monometer



## FTG BALTIC UAB

Dūmų st. 3K20  
LT-11119 Vilnius, Lithuania  
[+370 5 246 23 18](tel:+37052462318)  
[sales.vilnius@ftgforest.com](mailto:sales.vilnius@ftgforest.com)

For more information: [www.ftgforest.com](http://www.ftgforest.com)

By combining our Swedish heritage with constant innovation based on the needs of customers, we design forest trailers and cranes that impress by their consistently pleasant performance.

FTG Källefäll forest trailers can pass through challenging terrains and are robustly built to withstand tough conditions in the forest. Trailers' capacity varies from 4 to 12 tones. Our trailers can be supplemented with telescopic cranes, ranging from 4,2 to 9,4 meters reach. Källefäll cranes are strong, fast, and easy to operate. We also offer a wide range of timber grapples and other accessories to meet different needs.